

What's On Autumn 2018





THE WEST BAY

CLUB & SPA

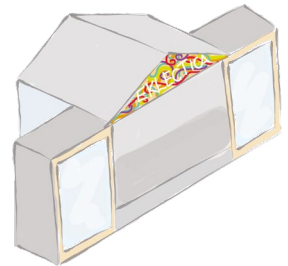
ISLE OF WIGHT

What's on Autumn 2018

EKLECTICA at Robin Hill – 7th – 9th September

Eklektica returns to Robin Hill Country Park outside of Newport on the Isle of Wight for a second year. This boutique music festival is taking place at Robin Hill and features a Tropical Rave Theme for Saturday festival goers. Scouting for Girls, The Hoosiers, The Fratellis, and Toploader are among the first bands to be announced as headliners for Eklektica 2018. It's a perfect weekend of fun for all the family! Prices range from £25 - £75, depending on age and ticket type.

www.eklectica.live



The Hops Festival – 16th September

The Hops Festival celebrates the harvest of the hops grown on site at Ventnor Botanic Garden as well as the continuation of the tradition of picking them by hand. During the day, entertainment for all ages, including dance, magic and plenty of competitions and games, food served throughout the day and live music with local performers and much more will help to set the merry atmosphere and ensure the celebrations of this year's harvest continue in style. Donations are necessary, with a minimum of £5 to enter.

www.botanic.co.uk



Festival of Light Inspired by Diwali – 29th September – 4th November

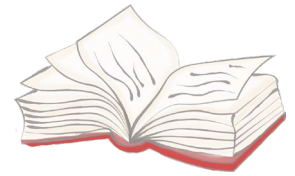
In the Autumn of 2018, Robin Hill's popular electric woods event, Festival of Light inspired by Diwali, is back celebrating India's independence with stunning, creatively themed light, colour, sound and entertainment that captures the many aspects of Indian culture. The Festival of Light will take place at Robin Hill just outside of Newport on the Isle of Wight. Every evening from 29th September – 4th November, 6pm – 10pm, visitors can experience the lush colours, flavours and magic of the Asian sub-continent set in Robin Hill's glorious autumnal ancient woodland as they venture on a journey of discovery of India.

www.electricwoods.co.uk



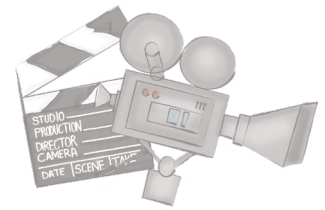
The Isle of Wight Literary Festival – 11th – 14th October

Now in its seventh year, the Literary Festival is a non-profit making charitable trust. Over time the Festival has gone from strength to strength, attracting attention from high-profile speakers and literary talents, from Max Hastings to Mary Berry, Michael Morpurgo to Deborah Moggach and Andrew Marr to Val McDermid. Most of the activities take place in and around Northwood House, a Grade II listed manor house set in over 20 acres of park in the heart of Cowes. Why not head along to enjoy a spirited debate or interesting talk?
www.isleofwightliteraryfestival.com



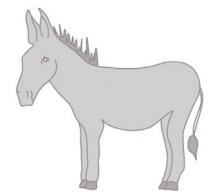
Island Con – 20th October – 21st October

Island Con is a celebration of pop-culture that will play host to a packed program of live stage interviews with stars such as Bam Margera, cast members from the American Pie movies and more, as well as Q&As, cosplay contests and panel discussions. There will be food areas, a large exhibition hall, a whole host of independent movie actors and creatives, evening parties, thousands of colourful characters, and not forgetting a full roster of comic book artists and writers! This is an amazing opportunity to meet Hollywood legends, have photos taken with your heroes and enjoy the festival-style convention with your family. Ticket prices are £65 for a weekend family ticket, or £22 for adults and £12 for children.
www.islandcon.co.uk



The Isle of Wight Donkey Sanctuary

The Isle of Wight Donkey Sanctuary is based between Shanklin and Ventnor on the road to Wroxall. Everyone is welcome to come and visit the lovely donkeys. Usually there are more than 100 animals in the Isle of Wight Donkey Sanctuary's care – usually over 90 donkeys and 25 horses and ponies. The animals live in over 55 acres of beautiful countryside.
www.iowdonkeysanctuary.org



Yarmouth Town Estuary & Harbour Treasure Hunt Trail

Explore Yarmouth on this self-guided treasure hunt themed treasure trail. As you follow the trail route, can you solve the sneaky clues set on existing buildings, permanent features and monuments to discover the location of the buried treasure?
www.treasuretrails.co.uk



Tapnell Farm Park

Inside this all-weather attraction you will find a wide range of hands-on animal experiences, and indoor and outdoor play – with lots to keep kids and adults entertained.
www.tapnellfarm.com



West Wight Alpacas

Head down to the West Wight Alpaca farm and meet all the furry friends. The farm has alpacas, llamas, pigs, goats, donkeys, sheep and more...
www.westwightalpacas.co.uk



The Needles Landmark Attraction

As soon as you think of the Isle of Wight the iconic image of the world famous chairlift taking you to see The Needles rocks and coloured sands spring to mind. The Islands most famous landmark attraction has so much more to enjoy than the stunning views, it is a destination not to be missed. The range of attractions include the spectacular chairlift ride to the beach and the sand cliffs. At the sand shop visitors can make their own unique coloured sand souvenir. With a wide range of thrilling rides, nostalgic games and awe-inspiring adventures on site, there is something for all the family – old and young, brave and cautious. From walking on water to adventure golf, the rides and games ensure you'll have a fun-filled visit.

www.theneedles.co.uk



Ventnor Botanic Gardens

Ventnor Botanic Garden lies in the remarkable micro-climate at the heart of the famous 'Undercliff.' With an average rainfall of 28 inches its climate is more akin to the Mediterranean. This enables a wide variety of plants considered too tender for much of mainland Britain to be grown.

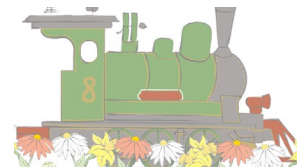
www.botanic.co.uk



Isle of Wight Steam Railway

Treat yourself to a relaxing day out and enjoy the spectacle of some of the Island's blossoming springtime countryside from the comfort of your seat on one of the traditional steam trains.

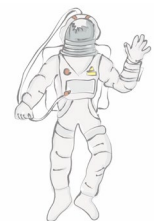
www.iwsteamrailway.co.uk



Island Planetarium

The Island Planetarium has been "Reaching for the Stars" for over 20 years, offering a fascinating journey through time and space; stimulating your imagination and mind, in their astrodome theatre and exhibition.

www.islandastronomy.co.uk



Godshill Model Village

This beautiful model village nestles in the grounds of the Old Vicarage. Set in nearly two acres of gorgeous landscaped gardens this is a real retro find - a quintessentially English visitor attraction. You will find scale models of Shanklin and Godshill villages as they were in the 1920's. The cottages, pubs and churches are faithfully reproduced versions of the real buildings in 1/10th scale. The garden railway is a must see - a snapshot of the Island Line of yesteryear!

www.modelvillagegodshill.co.uk



Amazon World Zoo Park

Amazon World Zoo Park is the Isle of Wight's largest exotic animal attraction and is a great day out whatever your age! Walk through jungle rainforests with colourful rare birds flying above you and crocodiles watching you from the pond!

www.amazonworld.co.uk



Adventure Activities Isle of Wight

Join Adventure Activities for a kayak surfing session, archery in the woods or jumping off the cliffs and swimming through the caves whilst coasting. You could be biking on the trails or wooded downhill, try paddle boarding or spend the day touring some of the Isle of Wight's stunning coastline on a kayak day trip.

www.adventureactivitiesisleofwight.co.uk



The Garlic Farm

Visit the Garlic Farm and learn all about garlic, where it comes from, how to grow your own and how to cook with it. Taste all of the unique and delicious products from garlic chutneys to garlic beer and ice cream in the 'taste before you buy' experience. Walk freely around the farm and see the highland cattle, pigs, horses, peacocks and red squirrels darting back and forth. See the different garlic varieties growing in the fields. At weekends and in the holidays jump on board the tractor trailer for tours around the farm.

www.thegarlicfarm.co.uk



Dinosaur Isle

Dinosaur Isle is Britain's first purpose built dinosaur attraction. Just over the sea wall in Sandown, in a spectacularly shaped building reminiscent of a Pterosaur flying across the cretaceous skies, you can walk back through fossilised time to the period of the dinosaurs 120 million years ago. Set in amongst a recreated landscape you will meet life sized models of the Isle of Wight's famous five dinosaurs. Flying above you amongst the haunting sounds of a long lost forest are pterodactyls. You will see dinosaur skeletons as they are found by the fossil hunters and can watch volunteers preparing the latest exciting finds.

www.dinosaurisle.com



Osborne House

Osborne House, Queen Victoria's family home, is one of the most popular tourist attractions on the Isle of Wight. After first visiting Osborne, England's longest-reigning monarch wrote: 'It is impossible to imagine a prettier spot.' Ever since Queen Victoria's own princes and princesses played here, Osborne has been a special place of fun and freedom for children and families. Queen Victoria's beach and the Swiss Cottage are firm favourites with younger visitors. Enjoy the part shingle and part sand beach, with its gentle slope into the sea making it ideal for paddling and swimming. Created especially for the royal children, the Swiss Cottage is still the perfect place for family fun today. Hidden in the woods, you can see where the princes and princesses planted their gardens, explore the museum full of strange and fascinating objects, and jump around in the play area. Find out more about the nine royal children in the interactive exhibition and follow the garden adventure trail.

www.english-heritage.org.uk

